

CORPORATE FASHION

BESTSELLER




seidensticker

EXPLORE NOW

We would like to invite you to our B2B Webshop. Make use of the advantages of our trade portal:

- Easy ordering process directly via internet – around the clock
- Up to date information about the availability of all webshop articles
- Visualisation of articles

We are looking forward to welcoming you to our B2B Webshop for dealers. Start your Seidensticker online purchase now.

Any questions? Please contact us:
corporate-fashion@seidensticker.de

Wir laden Sie herzlich in unseren B2B Webshop ein. Nutzen Sie die Vorteile unseres Händlerportals:

- Einfache Bestellung direkt im Internet – rund um die Uhr
- Aktuelle Informationen zur Verfügbarkeit der Webshop Artikel
- Visualisierung der Artikel

Wir würden uns freuen, Sie in unserem B2B Webshop für Händler begrüßen zu dürfen. Starten Sie direkt mit dem Online-Einkauf bei Seidensticker.

Sie haben Fragen? Bitte kontaktieren Sie uns:
corporate-fashion@seidensticker.de

www.quintet24.com

Sales Germany

Fon: +49 (0) 521 306 - 472
Fax: +49 (0) 521 306 - 755
corporate-fashion@seidensticker.de

Sales International

Fon: +49 (0) 521 306 - 590
Fax: +49 (0) 521 306 - 755
corporate-fashion@seidensticker.de

PASSION SINCE 1919



Seidensticker Headquarter
Bielefeld, Germany

Innovative power combined with modern traditional insight forms the SEIDENSTICKER philosophy. Since its foundation in 1919, the interaction of inherited specialisation and lived innovative culture has always been the impulse for the owner-operated company.

Innovationsdrang in Verbindung mit modernem Traditionsverständnis bildet die Grundlage der SEIDENSTICKER-Philosophie. Das Zusammenspiel aus vererbtem Spezialistentum und gelebter Innovationskultur ist der Antrieb des inhabergeführten Unternehmens seit seiner Gründung im Jahre 1919.

SEIDENSTICKER GROUP

- 100 percent family-owned
 - 2,300 employees worldwide
 - 15 company facilities
 - 4 company production sites in Asia
 - 10 million produced shirts and blouses per year
-
- 100 Prozent in Familienbesitz
 - 2.300 Mitarbeiter weltweit
 - 15 Unternehmensstandorte
 - 4 unternehmenseigene Produktionsstandorte in Asien
 - 10 Millionen produzierte Produkte im Jahr



Seidensticker Headquarter
Bielefeld, Germany

CORPORATE RESPONSIBILITY

„RESPONSIBILITY EXTENDS TO THAT POINT,
WHERE AN EFFECT CAN BE ACHIEVED.“

As a family business, we have set our objective in reconciling social, ecological and economical responsibility. On the basis of our policy statement, we have clearly strengthened our corporate responsibility commitment during the last few years and established a holistic sustainability strategy, with eight elements of transparent objectives, defined along our value chain, along with an on-product labelling “together responsible” for the first time.

A giant step – but for us it is only the beginning.

„VERANTWORTUNG ERSTRECKT SICH DA,
WO WIRKUNG ERZIELT WERDEN KANN.“

Als Familienunternehmen verfolgen wir das Ziel, soziale, ökologische und ökonomische Verantwortung miteinander in Einklang zu bringen.

Auf Basis unserer Grundsatzerklärung haben wir unser Corporate Responsibility Engagement in den letzten Jahren deutlich verstärkt und für die Marke Seidensticker eine ganzheitliche Nachhaltigkeitsstrategie etabliert, die in acht Elementen transparente Zielsetzungen entlang unserer Wertschöpfungskette definiert sowie erstmalig eine On-Product-Kennzeichnung „together responsible“ beinhaltet.

Ein großer Schritt – für uns aber erst der Anfang.



LET'S GET BETTER TOGETHER

Fair and environmentally-friendly produced products are indicated with the on-product labeling “together responsible”.



Sustainable Raw
Materials Supply

Nachhaltiger
Rohstoffanbau



Ethical
Manufacturing

Sozialverträgliche
Produktion



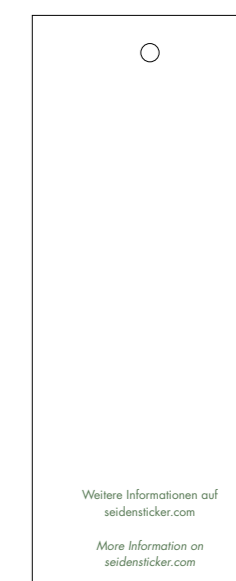
Environmental-friendly
Fabric Production

Umweltfreundliche
Geweberstellung



Climate Neutral
Packaging & Shipping

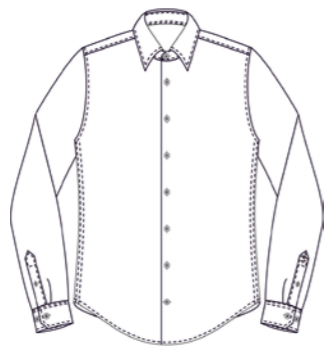
Klimaneutrale
Verpackung & Versand



Learn more:



POPLIN



SLIM

Business Kent 1/1
 Sizes: 36 - 45
 Waist: 98 cm for size 40

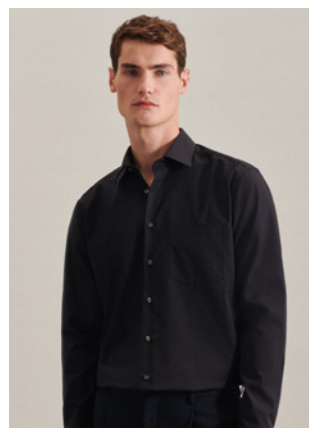
| | | |
|--|-----------|-----------|
| | White | 675198.01 |
| | Dark navy | 675198.19 |
| | Black | 675198.39 |



SHAPED

Business Kent 1/1
 Sizes: 37 - 46
 Waist: 102 cm for size 40

| | | |
|--|-----------|-----------|
| | White | 021000.01 |
| | Dark navy | 021000.19 |
| | Black | 021000.84 |



REGULAR

Business Kent 1/1 with breast pocket
 Sizes: 38 - 48
 Waist: 108 cm for size 40

| | | |
|--|-----------|-------------|
| | White | 003000.01 * |
| | Dark navy | 001000.19 |
| | Black | 001000.84 * |

EXTRA LONGSLEEVE AVAILABLE IN WHITE AND BLACK.

Slim: 675665.01/ 675665.39 Shaped: 021005.01/ 021005.39 Regular: 003005.01/ 003005.39

* Size 38 - 54

POPLIN



SLIM

Kent 1/1
 Sizes: 32 - 48

| | | |
|--|-------|-----------|
| | White | 080635.01 |
| | Black | 080635.39 |



REGULAR

Kent 1/1
 Sizes: 34 - 54

| | | |
|--|-----------|-----------|
| | White | 080604.01 |
| | Dark navy | 080604.18 |
| | Black | 080604.39 |



SLIM

Kent 1/1
 Sizes: 32 - 48

| | | |
|--|-----------|-----------|
| | White | 080613.01 |
| | Dark navy | 080613.18 |
| | Black | 080613.39 |

POPLIN



SLIM

Business Kent 1/2
 Sizes: 36 - 45
 Waist: 98 cm for size 40

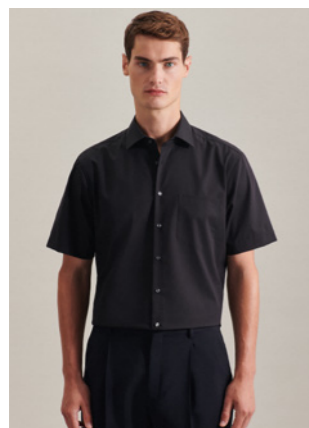
| | | |
|--|-----------|-----------|
| | White | 676521.01 |
| | Dark navy | 676521.19 |
| | Black | 676521.39 |



SHAPED

Business Kent 1/2
 Sizes: 37 - 46
 Waist: 102 cm for size 40

| | | |
|--|-----------|-----------|
| | White | 021001.01 |
| | Dark navy | 021001.19 |
| | Black | 021001.84 |



REGULAR

Business Kent 1/2 with breast pocket
 Sizes: 38 - 48
 Waist: 108 cm for size 40

| | | |
|--|-----------|-------------|
| | White | 003001.01 * |
| | Dark navy | 001001.19 |
| | Black | 001001.84 |

* Size 38 -54

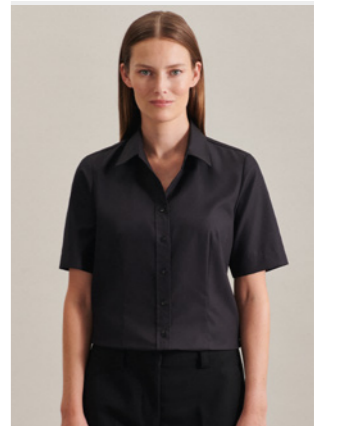
POPLIN



SLIM

Kent 1/2
 Sizes: 32 - 48

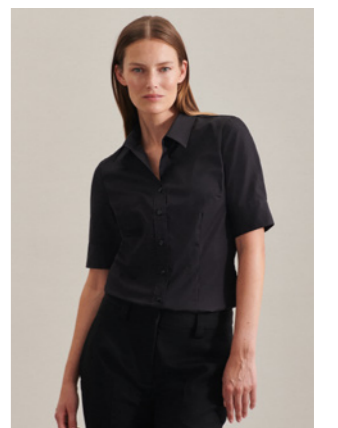
| | | |
|--|-------|-----------|
| | White | 080636.01 |
|--|-------|-----------|



REGULAR

Kent 1/2
 Sizes: 34 - 54

| | | |
|--|-------|-----------|
| | White | 080605.01 |
| | Black | 080605.39 |

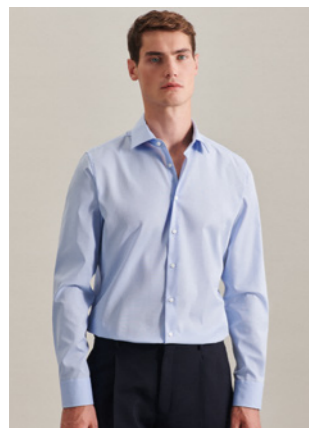


SLIM

Kent 1/2
 Sizes: 32 - 48

| | | |
|--|-------|-----------|
| | White | 080614.01 |
| | Black | 080614.39 |

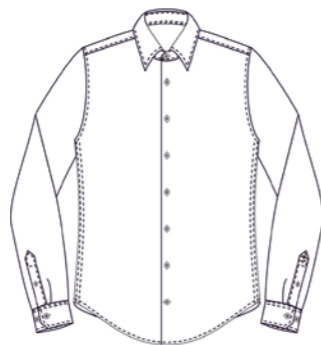
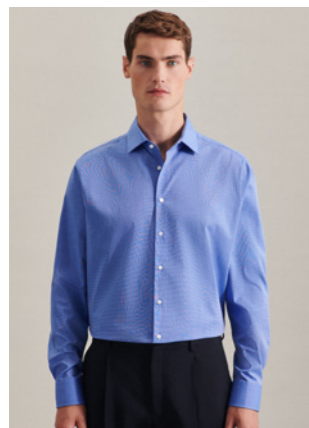
FIL À FIL



SLIM

Business Kent 1/1
 Sizes: 36 - 45
 Waist: 98 cm for size 40

| | | |
|--|------------|-----------|
| | Light blue | 666260.10 |
| | Mid blue | 666260.11 |
| | Anthra | 666260.37 |



SHAPED

Business Kent 1/1
 Sizes: 37 - 46
 Waist: 102 cm for size 40

| | | |
|--|------------|-----------|
| | Light blue | 241600.10 |
| | Mid blue | 241600.14 |
| | Anthra | 241600.34 |



REGULAR

Business Kent 1/1 with breast pocket
 Sizes: 38 - 54
 Waist: 108 cm for size 40

| | | |
|--|------------|-------------|
| | Light blue | 003000.48 * |
| | Mid blue | 003000.14 * |
| | Anthra | 003000.67 * |

EXTRA LONGSLEEVE AVAILABLE IN LIGHT BLUE AND ANTHRA.

Slim: 675665.10/ 675665.37 Shaped: 021005.10/ 021005.37 Regular: 003005.10/ 003005.37

* Size 38 - 54

FIL À FIL



REGULAR

Kent 1/1
 Sizes: 34 - 54

| | | |
|--|------------|-----------|
| | Light blue | 080604.12 |
| | Mid blue | 080604.14 |
| | Anthra | 080604.33 |



SLIM

Kent 1/1
 Sizes: 32 - 48

| | | |
|--|------------|-----------|
| | Light blue | 080613.12 |
| | Mid blue | 080613.14 |
| | Anthra | 080613.33 |



FIL À FIL



SLIM

Business Kent 1/2
 Sizes: 36 - 45
 Waist: 98 cm for size 40

| | | |
|--|------------|-----------|
| | Light blue | 666261.10 |
| | Mid blue | 666261.11 |
| | Anthra | 666261.37 |



SHAPED

Business Kent 1/2
 Sizes: 37 - 46
 Waist: 102 cm for size 40

| | | |
|--|------------|-----------|
| | Light blue | 241601.10 |
| | Mid blue | 241601.14 |
| | Anthra | 241601.34 |



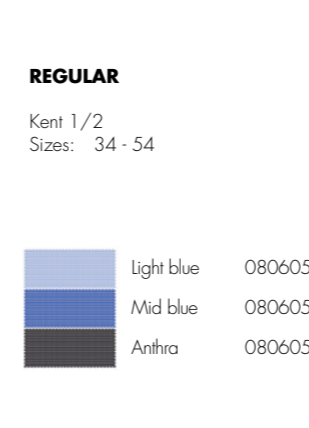
REGULAR

Business Kent 1/2 with breast pocket
 Sizes: 38 - 48
 Waist: 108 cm for size 40

| | | |
|--|------------|-------------|
| | Light blue | 003001.48 |
| | Mid blue | 003001.14 * |
| | Anthra | 003001.67 |

* Size 38 -54

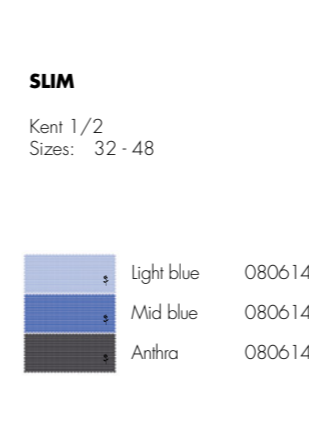
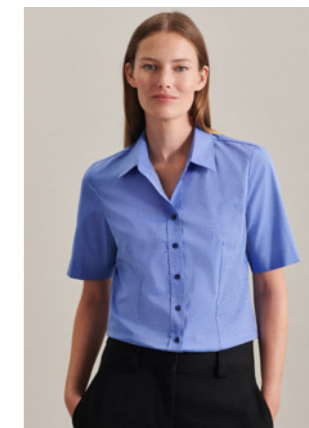
FIL À FIL



REGULAR

Kent 1/2
 Sizes: 34 - 54

| | | |
|--|------------|-----------|
| | Light blue | 080605.12 |
| | Mid blue | 080605.14 |
| | Anthra | 080605.33 |



SLIM

Kent 1/2
 Sizes: 32 - 48

| | | |
|--|------------|-----------|
| | Light blue | 080614.12 |
| | Mid blue | 080614.14 |
| | Anthra | 080614.33 |



